

Location: Griffin, GA



**UNDERWRITERS  
Salvage Company**



**UNDERWRITERS  
Salvage Company**



**UNDERWRITERS  
Salvage Company**



**UNDERWRITERS  
Salvage Company**



**UNDERWRITERS  
Salvage Company**



OIL FILL  
8 QTS  
OIL FILL  
ACCESS



**UNDERWRITERS  
Salvage Company**



**UNDERWRITERS  
Salvage Company**



**UNDERWRITERS  
Salvage Company**





**UNDERWRITERS  
Salvage Company**



**UNDERWRITERS  
Salvage Company**



**UNDERWRITERS  
Salvage Company**



**UNDERWRITERS  
Salvage Company**



**UNDERWRITERS  
Salvage Company**



**UNDERWRITERS  
Salvage Company**



**UNDERWRITERS  
Salvage Company**



**UNDERWRITERS  
Salvage Company**





**UNDERWRITERS  
Salvage Company**



**UNDERWRITERS  
Salvage Company**



**UNDERWRITERS  
Salvage Company**



**UNDERWRITERS  
Salvage Company**



**UNDERWRITERS  
Salvage Company**



**UNDERWRITERS  
Salvage Company**



**UNDERWRITERS  
Salvage Company**



**UNDERWRITERS  
Salvage Company**





**UNDERWRITERS  
Salvage Company**



**UNDERWRITERS  
Salvage Company**



**UNDERWRITERS  
Salvage Company**



**UNDERWRITERS  
Salvage Company**



**UNDERWRITERS  
Salvage Company**



UNDERWRITERS  
Salvage Company



**UNDERWRITERS  
Salvage Company**



**UNDERWRITERS  
Salvage Company**





**UNDERWRITERS  
Salvage Company**



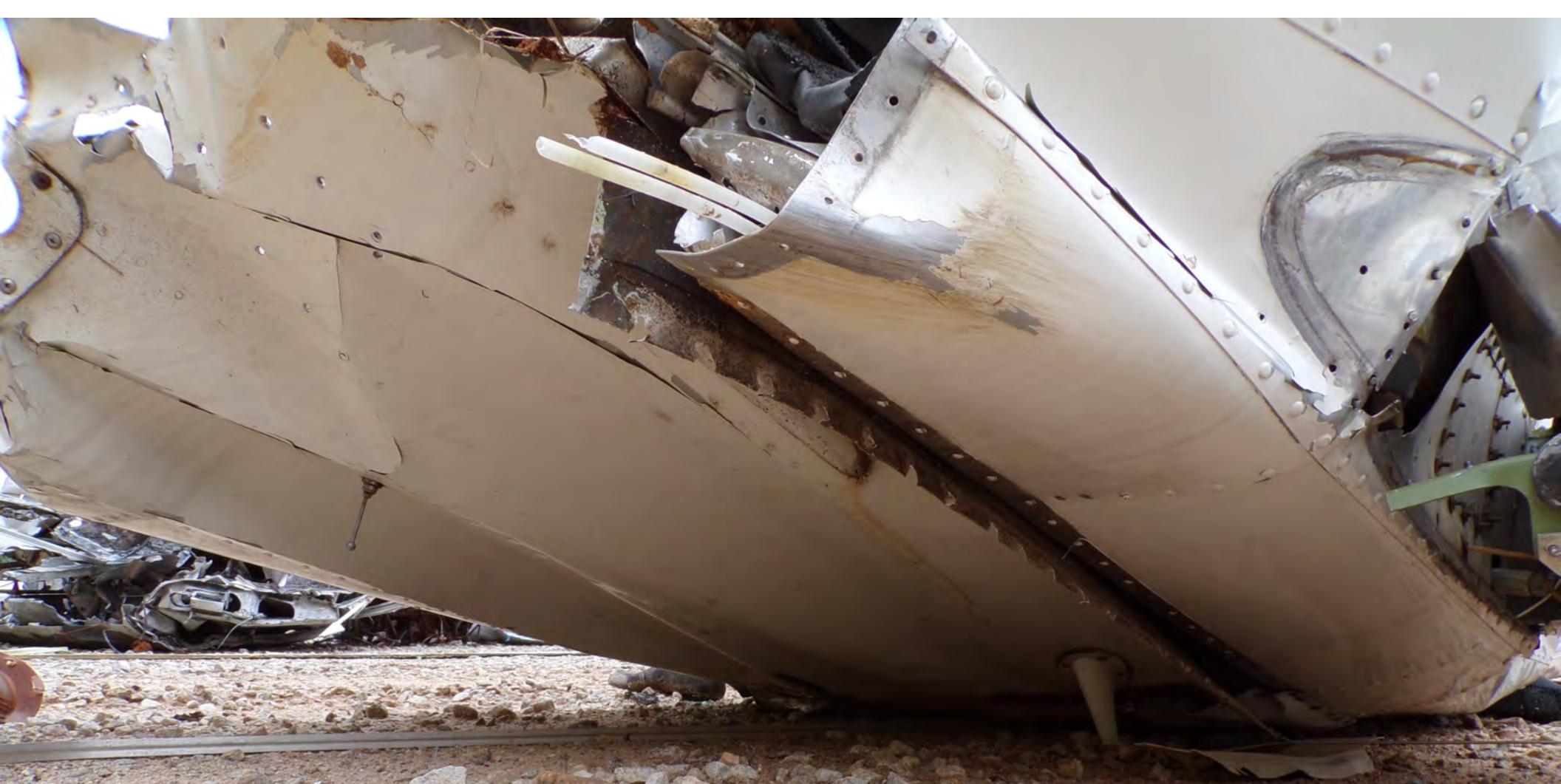
**UNDERWRITERS  
Salvage Company**



**UNDERWRITERS  
Salvage Company**



**UNDERWRITERS  
Salvage Company**



UNDERWRITERS  
Salvage Company



**UNDERWRITERS  
Salvage Company**



**UNDERWRITERS  
Salvage Company**



**UNDERWRITERS  
Salvage Company**





**UNDERWRITERS  
Salvage Company**



**UNDERWRITERS  
Salvage Company**



**UNDERWRITERS  
Salvage Company**



**UNDERWRITERS  
Salvage Company**



**UNDERWRITERS  
Salvage Company**

**WARNING**  
POSITION  
SELECTOR  
IN DETENTS  
ONLY - NO  
FUEL FLOW  
IN RED ARC

L TANK 29 GAL  
USE 15 GAL FROM LEFT TANK FIRST  
R TANK  
OFF



**UNDERWRITERS  
Salvage Company**



**UNDERWRITERS  
Salvage Company**



**UNDERWRITERS  
Salvage Company**



SURECHECK

PRO CHECKLIST

## Beech Sierra 24-R

W/1983 S/N MC2 &amp; MC795

## APPROACH / LANDING

ATIS / Altimeter / Heading	Complete
Brief / Seat Belts	Check
Mixture	Set
Fuel Selector	Fullest
Gear Down Vlo	135 KIAS (155)
Flaps Down Vfe	96 KIAS (111)
Landing Light	As Needed
Normal Approach	74 KIAS (85)
Short Field	66 KIAS (76)
GUMPS	Check

## GO AROUND

Throttle	FULL
GEAR / FLAPS	Retract As Needed
Offset runway	Communicate
Vx (Best Angle)	83 KIAS (96)
Vy (Best Rate Of Climb)	84 KIAS (97)

## MANUAL GEAR EXTENSION

Gear Motor Circuit Breaker	PULL
Landing Gear Switch	DOWN
Throttle	12" Hg or Less
Airspeed	100 KIAS (115)
Emergency Extension Valve	OPEN C-Clockwise
Gear Position Lights	VERIFY DOWN

## AFTER LANDING

Flaps	UP
Mixture	Adjust
TXPNDR / Strobes	OFF
Clearance	Obtain

## SECURE

Avionics / Navigation	OFF
Boost Pump	OFF
Mags (OFF / ON)	Grounding Check
Mixture	Idle-Cut-Off
Mags / Ignition	OFF
BATTERY / ALT	OFF
Chocks / Chains / Papers	Complete

## CLOSE FLIGHT PLAN

## LOST COM

Check: Freq., Volume, Squelch, Phones	
Transponder	7600
Pattern / Light Signals	Enter / Observe

Light Signals

	GROUND	FLIGHT
Green (Steady)	Cleared For Takeoff	Cleared To Land
Green (Flashing)	Cleared to Taxi	Return for Landing
Red (Steady)	STOP	Give Way to Others
Red (Flashing)	Taxi Clear of Runway	Airport UNSAFE
White (Flashing)	Return to Starting Point	N/A
Alt. Red/Green	CAUTION	CAUTION

## Emergencies

## ENGINE FAILURES

## IMMEDIATELY AFTER TAKEOFF

Pitch	66 KIAS (76)
Troubleshoot	If Alt Permits
Land	Straight Ahead
Fuel Selector	Secure
Boost Pump	OFF
Mixture	Idle Cut-Off
Ignition / BATTERY	OFF
Doors	Ajar

## DURING FLIGHT

Pitch	91 KIAS (105)
Landing Site Select	Land into Wind
Heading	To Landing Site
Flaps / Gear	UP
Mixture	RICH
BATTERY Switch	ON
Boost Pump	ON
Fuel Selector	CHECK / Switch
IGNITION	BOTH / RESTART

## ENGINE FAILS TO START

Pitch	91 KIAS (105)
Communicate	121.5 or Current Freq.
Transponder	7700
Seat Belts	Secure
Fuel / Mixture	OFF
Doors	Ajar
Gear / Flaps	As Needed
Airspeed with flaps	66 KIAS (76)

## FIRES

## ENGINE FIRE DURING FLIGHT

Fuel / Mixture	OFF
BATTERY Switch	OFF
Vents / Windows	OPEN if smoke enters

## ELECTRICAL FIRE DURING FLIGHT

BATTERY Switch	OFF
Cabin Heat / Vents	As Required
Avionics	OFF
Circuit Breakers	Check which is out
Fire	Extinguish
TROUBLESHOOT	by turning on one by one

## EMERGENCY DESCENT

Throttle	Idle
Airspeed	135 KIAS (155)
Gear	DOWN
Landing site	Acquire

## ELECTRICAL TROUBLESHOOTING

Avionics	OFF
Circuit Breaker	Check
ALT	Cycle

## Ammetu

- Cold Start:**
- Mixture - FULL RICH
  - Throttle - FAST IDLE position
  - Fuel Boost Pump - ON (max of 3 sec. then OFF)
  - Magneto/Start Switch - START position (release to BOTH position when engine fires)

## Hot Start:

- Mixture - IDLE CUT-OFF
- Throttle - FAST IDLE position
- Magneto/Start Switch - ENGAGE
- Mixture - ADVANCE MIXTURE SLOWLY when engine starts firing regularly

## Flooded Engine:

- Mixture - IDLE CUT-OFF
- Throttle - FULL OPEN
- Magneto/Start Switch - ENGAGE
- Mixture - ADVANCE MIXTURE SLOWLY when engine starts firing regularly

Copyright © 1983  
www.surecheck.net (800) 343-0355

WARRANTY  
responsibility  
are made  
not a sub  
aircraft. P  
and agree  
involved, t  
property, t  
the degra  
Copyright ©  
www.surecheck.net (800) 343-0355

WARRANTY  
responsibility  
are made  
not a sub  
aircraft. P  
and agree  
involved, t  
property, t  
the degra  
Copyright ©  
www.surecheck.net (800) 343-0355



UNDERWRITERS  
Salvage Company

**Pre-flight CHECK**  
**Sierra 24-R**  
 S/N MC-2 & MC-795



**PRE-FLIGHT (INSIDE COCKPIT)**

Oil / Performance	Complete
AWOS documents	On Board
BATTERY	ON
Fuel Gauges / Fuel Valve	Check
Lights / Flaps	Check
Static System	Drained
BATTERY / Ignition / Mags	OFF

**EXTERNAL**

Locks / Chains / Chocks	Remove
Fuel Sumps	Drain
Fuel Tanks / Quantity	Inspect
Rivets / Skin / Doors	Check
Flaps / Ailerons / Rudder	Check
Tires / Brakes / Struts	Inspect
Tire Pressure (Nose/Mains)	35 PSI / 32 PSI
Oil	Check
Prop	Inspect
Landing Light / Nav Lights	Inspect
Pitot / Static	Inspect

**ENGINE START / TAXI**

Briefing / Seat Belts	Check
Parking Brake	Set
Avionics	OFF
Circuit Breakers	Check IN
Landing Gear	Down
Flaps	UP
Battery / Alternator	ON
Fuel Selector	Rotate 360 / Fullest
Electric Trim	OFF
Beacon / Lights	As Needed
Mixture	RICH
Prop	Full RPM
Throttle	1/2 inch OPEN
Area	Clear
Ignition Switch / Starter	START / BOTH
Oil Pressures	Check
Alternator	ON
Avionics / Transponder	ON / STBY
Mixture	Adjust
ATIS / AWOS / ASOS	Obtain
Taxi Clearance	Obtain
NOTE: Mixture Cut-OFF when flooded	
Brakes / Instruments	Check

**BEFORE TAKEOFF**

Brakes	Set
Avionics / Flight Controls	Check
Mixture	Adjust / DA & Elev
Throttle	2000 RPM
Mag Switches	L&R (50/25)
Prop	Exercise / FULL
Gauges / Suction / Ammeter	Check
Power	Reduce
Instruments	Check / Set
Fuel Selector	Fullest
COM / NAV's	Set
Doors / Windows	Lock
Trim / Flaps / Strobes	Set Takeoff
Transponder	ALT
Clearance	Obtain

**NORMAL TAKEOFF**

Runway	Alignment
Power / Crosswinds	Check
Vr (Rotate)	70 KIAS (81)
Vy (Best Rate Of Climb)	84 KIAS (97)

**SHORT / SOFT FIELD TAKEOFF**

Flaps	15°
SHORT: Runway	To End / Brakes
Power	FULL
SHORT: Vr (Rotate)	70 KIAS (81)
SOFT: Vr (Rotate)	Into Ground Affect
50' Barrier Speed	78 KIAS (90)
Vx (Best Angle)	83 KIAS (96)
Vy (Best Rate Of Climb)	84 KIAS (97)

**CLIMB**

Power	25" / 2500 RPM
Mixture	Adjust as Needed
Enroute Climb	96 KIAS (111)

**CRUISE**

Cruise Power	Set
Mixture	Adjust for fuel flow
Fuel & Temperature	Monitor
Instruments	Reset as Needed

**V-Speeds**

Vr	70	(81)	Vs0	57	(66)
Vy	84	(97)	Vfe	96	(111)
Vx	72	(83)	Va	125	(144)
Vlo	135	(155)	Vno	143	(165)
Vs	65	(75)	Vne	168	(193)

**Cruise Profile**

PALT	PWR	RP	MA	TA	MP	PH
5000	75%	2500	13.1"	139	110	121
5000	65%	2400	21.5"	125	145	7.1
5000	55%	2300	19.9"	110	136	7.9
8000	75%	2600	22.5"	111	160	11.0
8000	65%	2400	20.0"	112	145	11.7
8000	55%	2300	19.3"	120	138	7.1

V-speeds are listed in KIAS and (MPH)



**UNDERWRITERS Salvage Company**



**UNDERWRITERS  
Salvage Company**



MANUFACTURED BY  
**BEECH AIRCRAFT CORPORATION**  
MICHIGAN KANSAS

SERIAL

M C 5 2

MODEL

A 2 4 R

DATE MFD

ENGINE

LYC 10 360 - A1B

T.G.

A 1 F

LICENSED UNDER U.S. AIRCRAFT  
PATENTS OF ALL MEMBERS

MANUFACTURERS AIRCRAFT ASSOCIATION

U.S. AIRCRAFT NO

395258



**UNDERWRITERS Salvage Company**

MANUFACTURED BY  
**BECHM AIRCRAFT CORPORATION**  
MICHIGAN KANSAS

SERIAL NO 52  
MODEL A 24R

DATE MED

ENGINE LYC 10 360-P1B

T.G.

A 1 E

LICENSED UNDER U.S. AIRCRAFT PATENTS OF ALL MEMBERS MANUFACTURERS AIRCRAFT ASSOCIATION

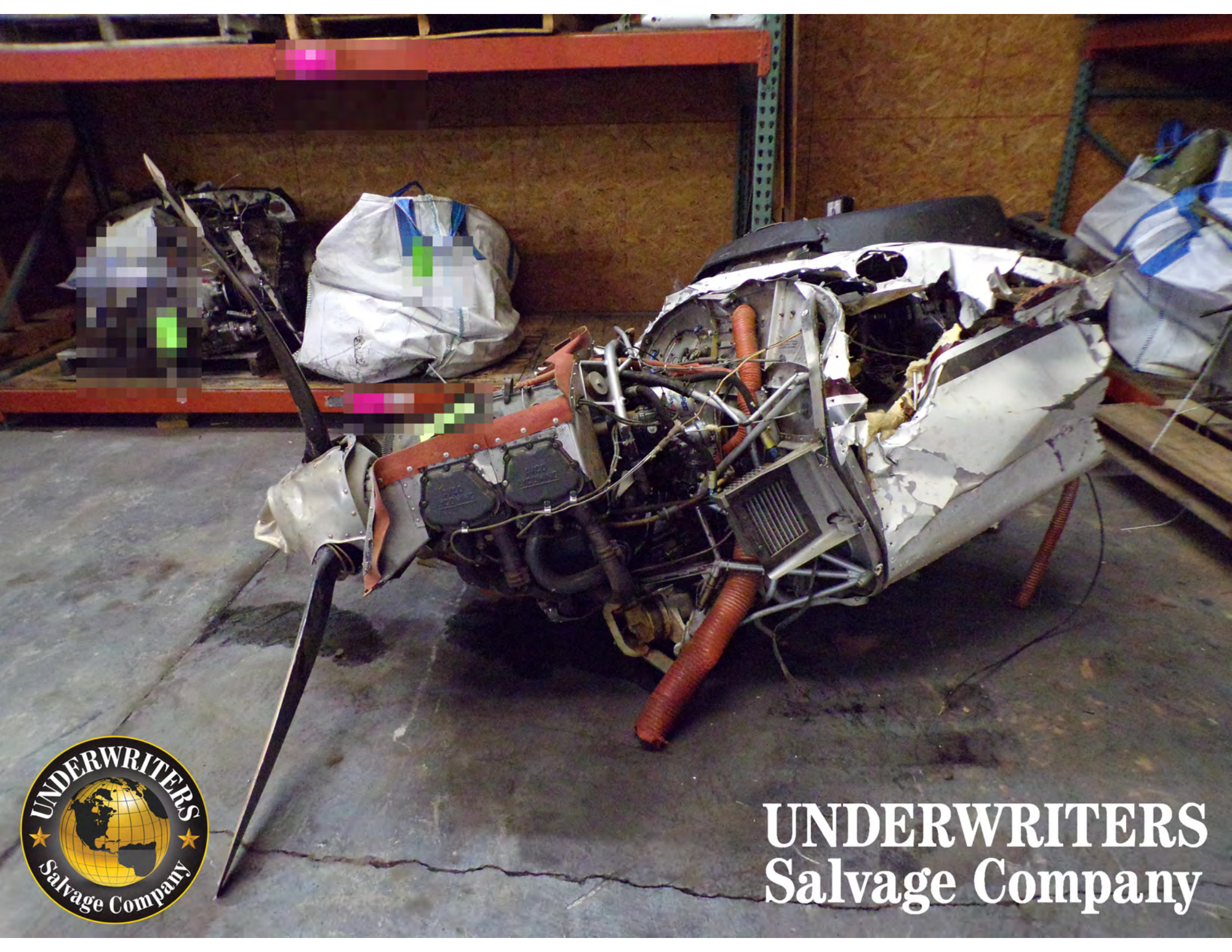
M.A.A. PLATE NO 395252



**UNDERWRITERS Salvage Company**



**UNDERWRITERS  
Salvage Company**



**UNDERWRITERS  
Salvage Company**

COMING  
coming.com

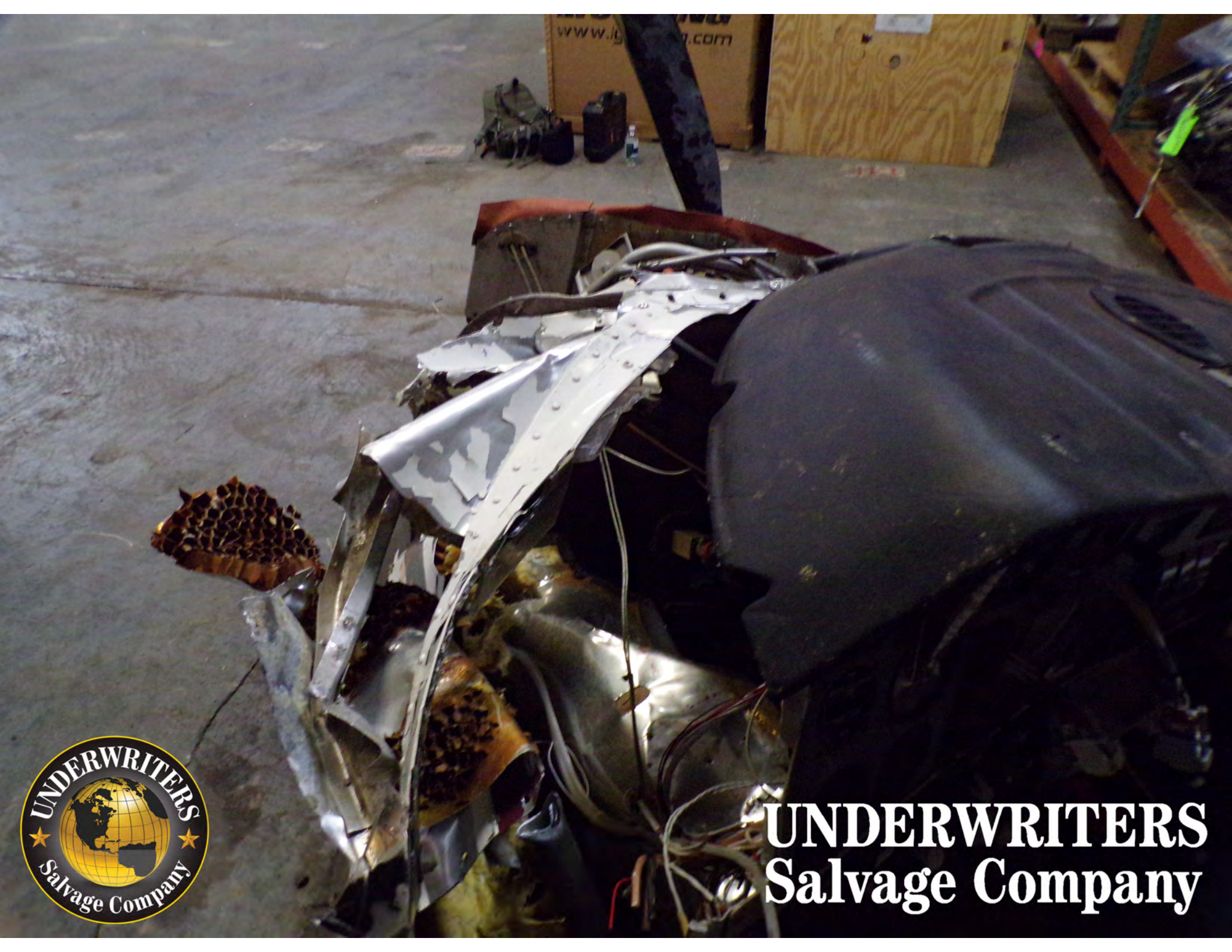


**UNDERWRITERS  
Salvage Company**





**UNDERWRITERS  
Salvage Company**



**UNDERWRITERS  
Salvage Company**